



Near Term Infrastructure-led Appraisal & Exploration Drilling

**Three well campaign to
target potential aggregated
volumes > 1 Tcf¹**

August 2022



¹ Internal exploration potential estimates, aggregated Pmean, unrisked Gas Initially-In-Place (gross, 100%) includes non-hydrocarbons, common examples of which are carbon dioxide and nitrogen



Disclaimer:

This presentation and any additional documents handed out at any meeting (together the “Presentation Materials”) have not been approved by (i) the London Stock Exchange plc or by any authority which could be a competent authority for the purposes of the Prospectus Directive (Directive 2003/71/EC); or (ii) an authorised person within the meaning of the Financial Services and Markets Act 2000 (“FSMA”). The securities mentioned herein have not been and will not be, registered under the U.S. Securities Act of 1933, as amended (the “Securities Act”), or under any U.S. State securities laws, and may not be offered or sold in the United States unless they are registered under the Securities Act or pursuant to an exemption from or in a transaction not subject to the registration requirements of the Securities Act. Neither the U.S. Securities and Exchange Commission nor any U.S. state regulatory authority has approved the securities to be offered or the terms of such offering or passed upon the accuracy or adequacy of the presentation and these Presentation Materials. Any representation to the contrary is a criminal offence.

The Presentation Materials are being supplied to you for information purposes only by Sound Energy Plc (the “Company”, “SOU” or “Sound”). References to the Company, SOU or Sound will also be deemed to include its subsidiaries, both directly and indirectly held (including through nominees) all wholly owned. These Presentation Materials have been prepared by and are the sole responsibility of the Company. The Directors of the Company have taken all reasonable care to ensure that the facts stated herein are true to the best of their knowledge, information and belief. Investing in the Company may expose an individual to significant risk of losing all of the property or other assets invested.

These Presentation Materials, being this presentation and any additional documents handed out in the meeting, are being issued on a strictly private and confidential basis and solely to and directed (i) at persons in the UK (a) who have professional experience in matters relating to investments, being investment professionals as defined in Article 19(5) of the Financial Services and Markets Act 2000 (Financial Promotion) Order 2005 (the “FPO”), (b) high net worth companies as defined in Article 49(2) of the FPO, (c) certified sophisticated investors as defined in Article 50(1) of the FPO or (d) persons to whom it may otherwise lawfully be communicated or (ii) persons in the United States or who are U.S. persons, who are “accredited investors” as defined in Rule 501 of Regulation D promulgated under the Securities Act (“Accredited Investors”) (together “Relevant Persons”). In order to qualify as a certified sophisticated investor you must have a current certificate signed by a person authorized by the Financial Conduct Authority to the effect that you are sufficiently knowledgeable to understand the risks associated with this particular type of investment and you must have signed within the last 12 months a statement in the terms set out in Article 50(1)(b) of the FPO. The ordinary shares are available only to, and any invitation, offer or agreement to subscribe, purchase or otherwise acquire the ordinary shares will be engaged in only with, Relevant Persons. Any person who is not a Relevant Person should not rely on this document nor take any action upon it, but should return it immediately to the Company.

These Presentation Materials do not constitute, or form part of, a prospectus relating to the Company, nor do they constitute or contain any invitation or offer to any person to subscribe for, purchase or otherwise acquire any shares in the Company or advise persons to do so in any jurisdiction, nor shall it, or any part of it form the basis of or be relied on in connection with any contract or as any inducement to enter into a contract or commitment with the Company. No reliance may be placed for any purpose whatsoever on the information or opinions contained in the Presentation Materials or on their completeness. No representation or warranty, express or implied, is given by the Company as to the accuracy of the information or opinions contained in the Presentation Materials, or any further written or oral information made available to you or your advisors, and is subject to updating, completion, revision, amendment or verification, which may result in material changes. The information contained in these Presentation Materials has not been independently verified.



Disclaimer continued:

Any recipient of these Presentation Materials who is in any doubt about the investment to which this presentation relates should consult an authorized person specializing in advising on investments of this kind. These Presentation Materials do not constitute a recommendation regarding the shares of the Company, and should not be construed as legal, business, tax or investment advice. Prospective investors are encouraged to obtain separate and independent verification of information and opinions contained in the Presentation Materials as part of their own due diligence. By accepting these Presentation Materials, the Recipient agrees to keep permanently confidential the information contained herein or sent herewith or made available in connection with further enquiries. It is a condition of the issue of these Presentation Materials that they will not be reproduced, copied, distributed or circulated to any third party, in whole or in part, or published in whole or in part for any purpose, without the express prior consent of the Company. Neither the Company, nor its advisers accept liability whatsoever for any loss howsoever arising, directly or indirectly, from use of these Presentation Materials or their contents or otherwise arising in connection therewith.

The Company, in its sole discretion, reserves the right to amend or supplement these Presentation Materials at any time. The Company also reserves the right, in its sole discretion, to terminate discussions with any person at any time.

The reproduction, copying or distribution of these Presentation Materials in other jurisdictions may be restricted by law and persons into whose possession these Presentation Materials come should inform themselves about, and observe, any such restrictions. These Presentation Materials are not for distribution outside the United Kingdom (other than to the United States in certain circumstances) and in particular, they or any copy of them should not be distributed, directly or indirectly, by any means (including electronic transmission) either to persons with addresses in Canada, Australia, Japan, the Republic of South Africa or the Republic of Ireland, or to any citizens, nationals or residents thereof, or to any corporation, partnership or other entity created or organized under the laws thereof. Any failure to comply with these restrictions may constitute a violation of the laws of any such other jurisdictions.

These Presentation Materials contain certain forward-looking information about the Company which are statements, beliefs, opinions or projections that are not historical facts, and which may be identified by the use of terminology such as “proposes,” “may,” “believes,” “anticipates,” “projects,” “expects,” “estimates” or “forecasts” or comparable terminology and which reflect the Company’s or, as appropriate, the Company’s Directors current expectations and beliefs about future events. By their nature, forward-looking statements involve a number of risks, uncertainties and assumptions that could cause actual results or events to differ materially from those expressed in such statements, beliefs and opinions depending on a variety of factors. Past performance, trends or activities of the Company or its shares cannot be relied on as a guide to future performance, trends or activities. Any forward-looking information contained in these Presentation Materials has been prepared on the basis of a number of assumptions which may prove to be incorrect, and accordingly, actual results may vary from those projected as a result of, among other factors, changes in economic and market conditions, changes in the regulatory environment and other business and operational risks. Recipients of these Presentation Materials should not place reliance on forward-looking statements, which speak only as of the date of the Presentation Materials. The Company does not undertake any obligation to update or revise any forward-looking statements, whether as a result of new information, future events, circumstances or otherwise or to reflect the occurrence or non-occurrence of any events.

Please note that the photographs and images used in these Presentation Materials are illustrative and may not show Company assets / licence areas.

By attending the presentation and/or retaining these Presentation Materials you will be taken to have represented, warranted and undertaken that: (i) you are a Relevant Person (ii) you have read and agree to comply with the contents and restrictions of this disclaimer (iii) you will use the information in these Presentation Materials solely for evaluating your possible interest in acquiring securities of the Company and (iv) you will conduct your own analysis or other verification of the data and information set out in these Presentation Materials and will bear the responsibility for all or any costs incurred in doing so.

Slide

Exploration
Summary



SOUND ENERGY : FUELLING THE ENERGY TRANSITION

FARMOUT A POSITION IN EXPLORATION PERMITS TO FUND INFRASTRUCTURE-LED DRILLING AND SEISMIC PROGRAMMES

SCALE

- ▶ Largest onshore operator in Morocco, proven gas basin

COMMERCIALITY

- ▶ Substantial portfolio exposed to attractive gas markets & leading fiscal terms

BASIN UNLOCKING INFRASTRUCTURE UNDER DEVELOPMENT

- ▶ TE-5 Horst Gas Discovery, recoverable resources of 377 Bcf (2C)¹
- ▶ Gas reservoir with flow rates significantly enhanced by mechanical stimulation

TE-7 tested at a peak rate of approximately 32 mmscf/d

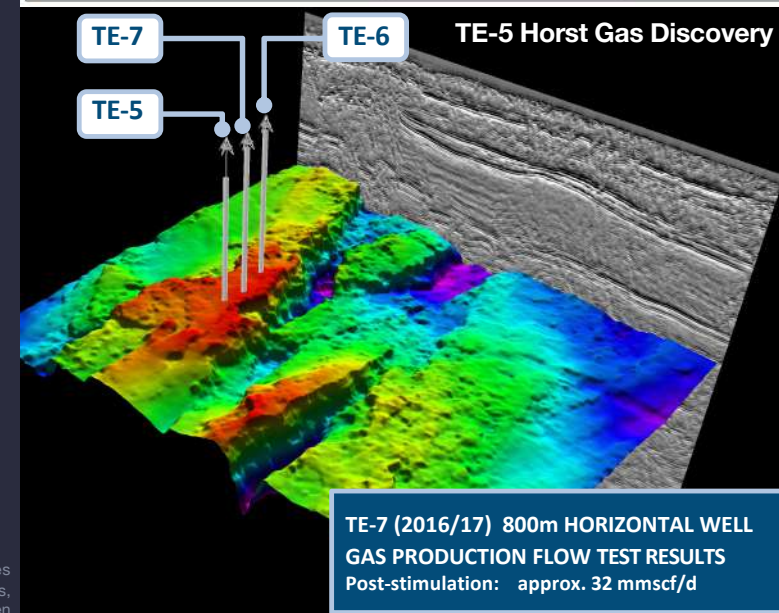
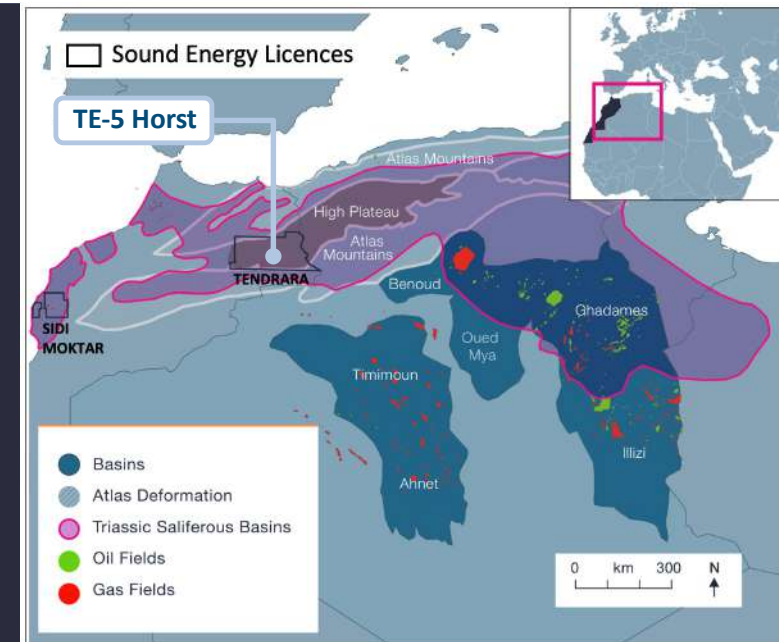
TENDRARA GAS APPRAISAL AND EXPLORATION DRILLING

- ▶ 3 well campaign targeting an aggregated volume > 1 Tcf GIIP²
- ▶ Commercialisation through developing infrastructure centred on the TE-5 Horst, sufficient capacity designed into the planned 120 km 20" Tendirara Export Pipeline (connecting with the existing Gazoduc Maghreb Europe pipeline), or as standalone projects.

- ▶ Rig available on existing contract
- ▶ Further running room on success

SIDI MOKTAR SEISMIC

- ▶ Exploring significant volume potential adjacent to the producing Meskala Gas field.
- ▶ Requires a short seismic programme to mature leads to drillable prospects



Slide

1

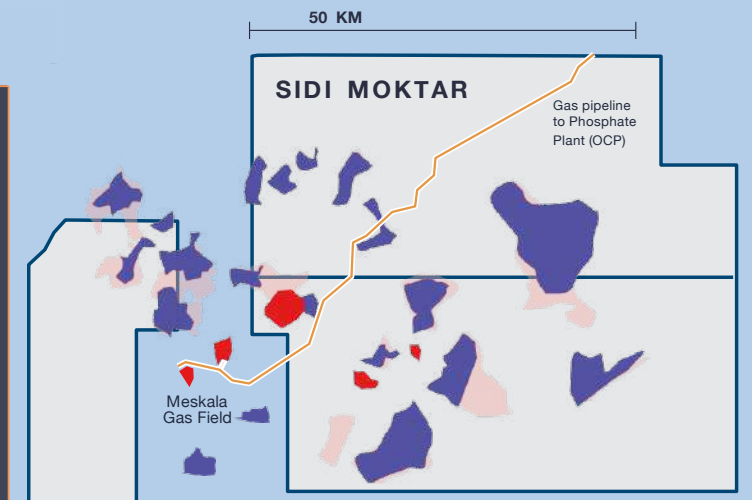
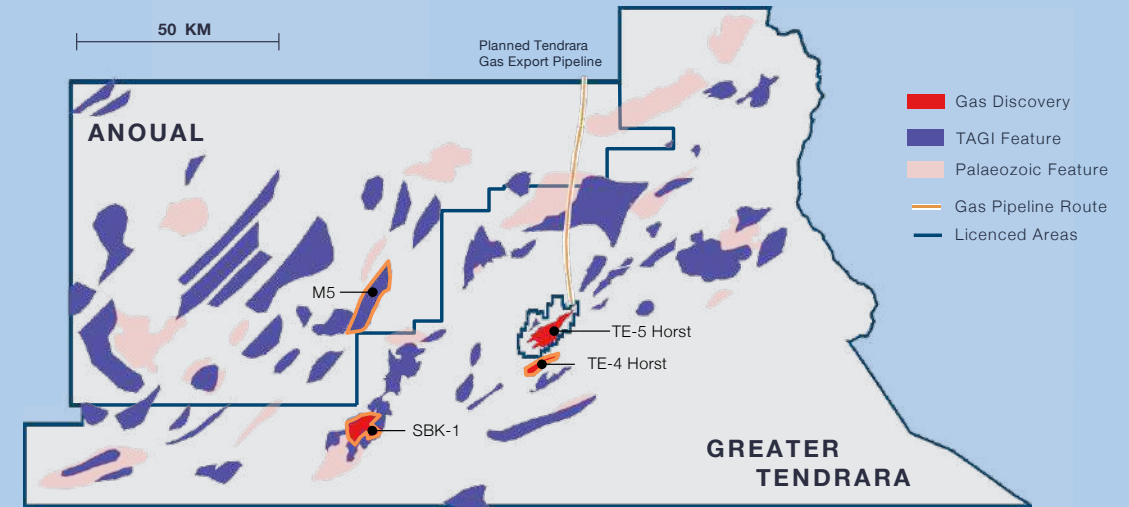
Exploration Summary

¹ 2C Certified by RPS Energy Consultants Limited 2018 (gross, 100%) recoverable resources

² Internal exploration potential estimates, aggregated Pmean, unrisksed Gas Initially-In-Place (gross, 100%) includes non-hydrocarbons, common examples of which are carbon dioxide and nitrogen



GAS EXPLORATION: Significant potential for scalable growth



- Largest onshore permit holder in Morocco, approximately 28,000 square kilometres licensed
- Proven extension of the North African Triassic sub-salt gas play into Morocco and potential for Palaeozoic sub-salt gas plays. These plays are prolific producers of petroleum in neighbouring Algeria
- Overlooked, high exploration potential for gas with an inventory of 28.35 Tcf GIIP¹ identified around existing gas discoveries e.g. TE-5 Horst, SBK-1 & Meskala

¹ Internal exploration potential estimates, unrisks Gas Initially-In-Place (gross, 100%) includes non-hydrocarbons, common examples of which are carbon dioxide and nitrogen

Slide

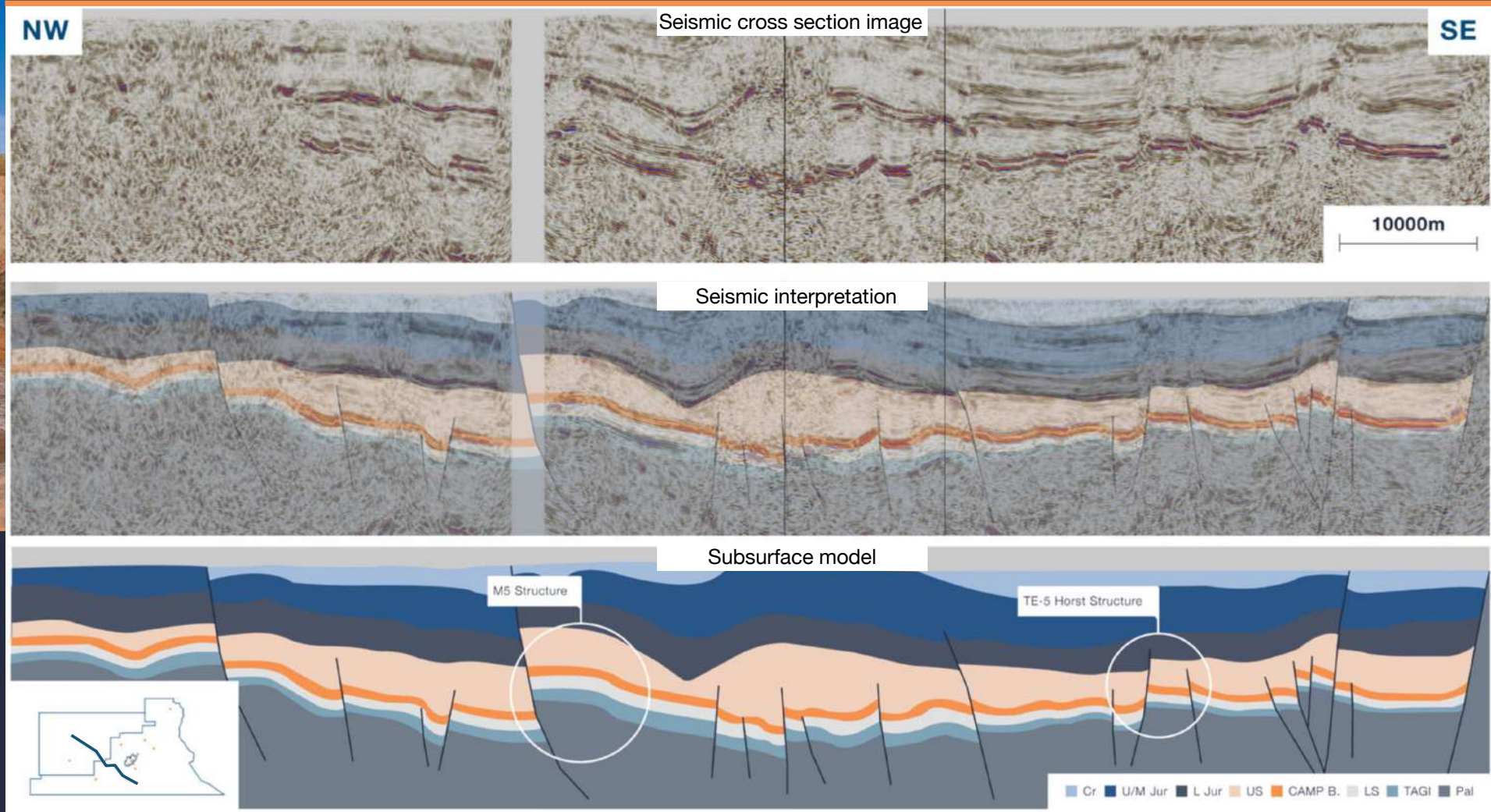
2

Exploration
Summary



GREATER TENDRARA & ANOUAL SUBSURFACE

- Sub-salt seismic imaging improved by 2017/18 Sound Energy geophysical surveys
- Numerous Triassic (TAGI reservoir) fault blocks remain undrilled beneath the extensive salt seal



Slide

3

Exploration
Summary

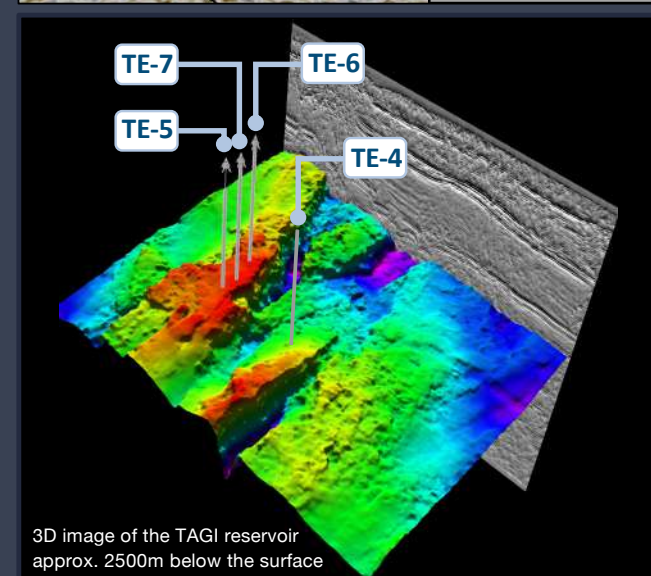
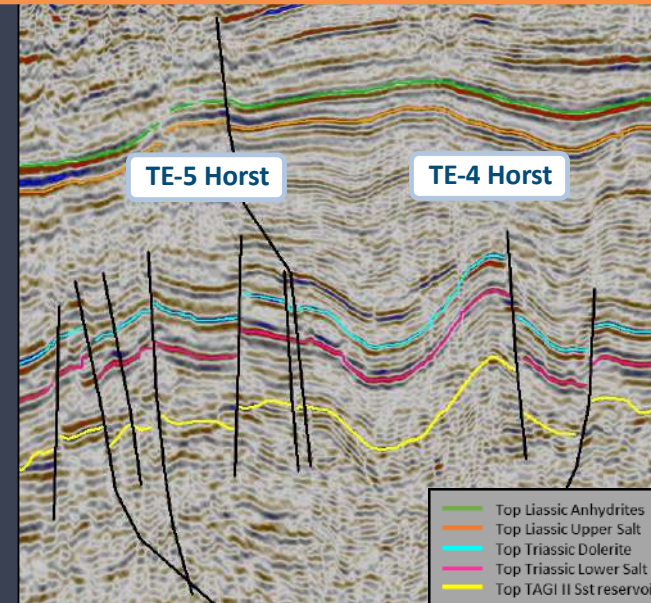
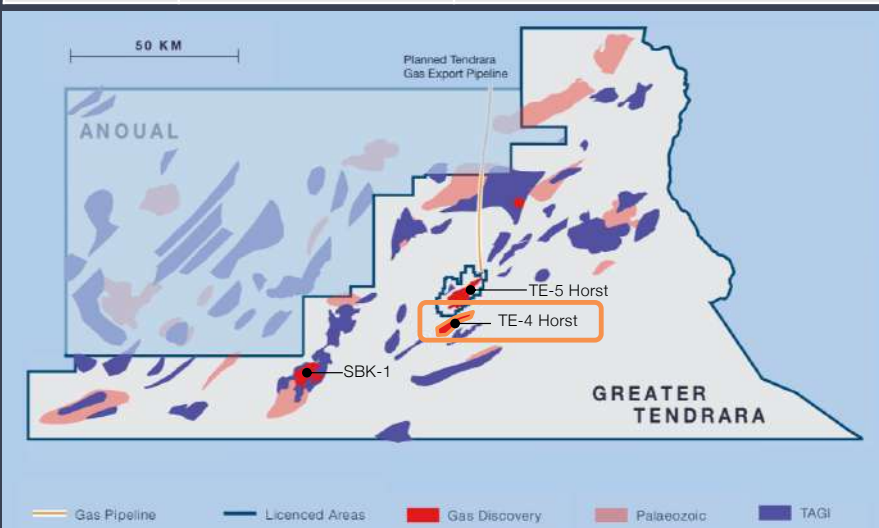


GREATER TENDRARA PERMIT: Appraisal of TE-4 Horst

Greater Tendrarra Exploration Permit	
Term	8 years from October 2018
Parties	Sound Energy 75% (operator), ONHYM 25%
Area	14,411 km ² , 8 wells drilled to date
Commitments	All work commitments completed for the initial permit period. Next voluntary period commences October 2022 with a 1 well commitment.

Key Subsurface Points					
Source	Palaeozoic, Silurian and Devonian organic rich shales				
Reservoir	Triassic TAGI, dominantly alluvial & fluvial sandstones and conglomerates				
Seal	Triassic, salt 500-1000m in thickness				
GIIP (Bcf) ¹	Low (P90)	Best (P50)	High (P10)	Mean (Pm)	Chance of Success
	153	260	408	273	

Drilling		
Total Depth	Approx. 2,900m bGL	Rig available and on contract
Cost Estimate	< \$7 million	



- Simple structure, fault block partially investigated by the TE-4 well drilled in 2006 by previous operator
- New seismic imaging demonstrates the TE-4 well location was suboptimal, at the spill point of the structure and potentially within the transition zone of a gas column
- Plan to drill on the crest, objective to locate higher quality reservoir lacking the pervasive carbonate cementation encountered in TE-4 well
- The TE-4 Horst is located approx. 5 kms from Sound Energy's planned production facilities in the Tendrarra Production Concession

Slide

4

Exploration
Summary

¹ Internal exploration potential estimates, unrisked Gas Initially-In-Place (gross). includes non-hydrocarbons, common examples of which are carbon dioxide and nitrogen

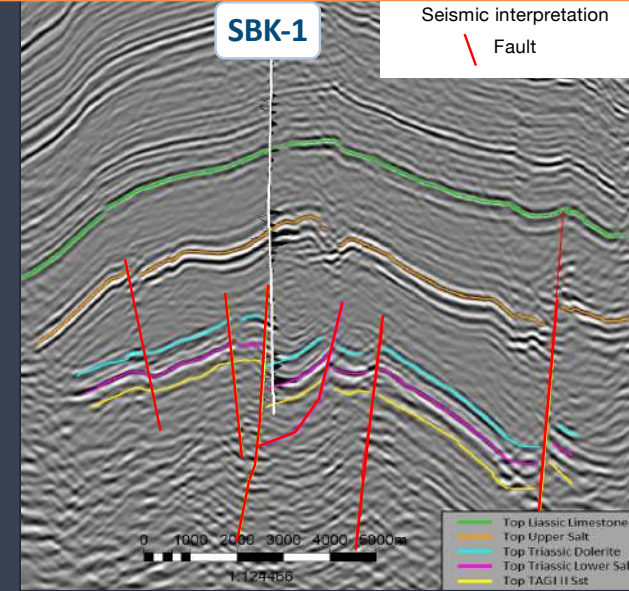
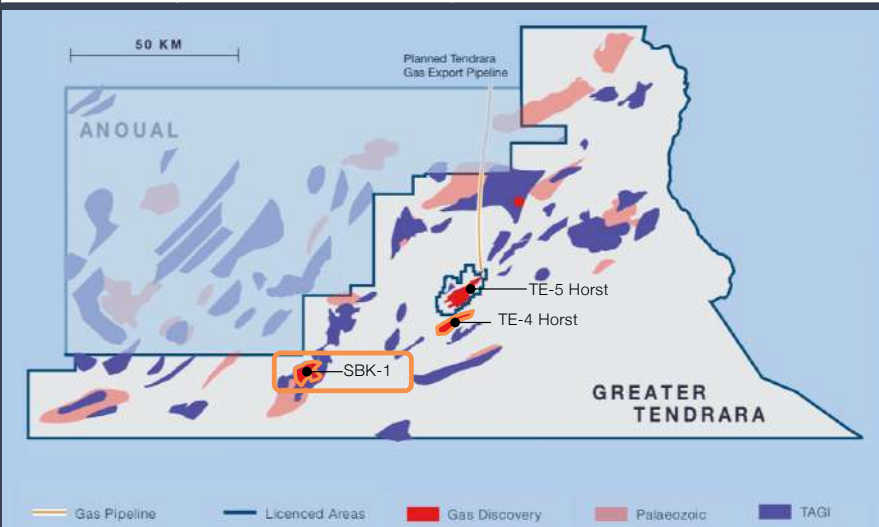


GREATER TENDRARA PERMIT: Appraisal of SBK-1

Greater Tendrara Exploration Permit	
Term	8 years from October 2018
Parties	Sound Energy 75% (operator), ONHYM 25%
Area	14,411 km ² , 8 wells drilled to date
Commitments	All work commitments completed for the initial permit period. Next voluntary period commences October 2022 with a 1 well commitment.

Key Subsurface Points					
Source	Palaeozoic, Silurian and Devonian organic rich shales				
Reservoir	Triassic TAGI, dominantly alluvial & fluvial sandstones and conglomerates				
Seal	Triassic, salt 500-1000m in thickness				
GIIP (Bcf) ¹	Low (P90)	Best (P50)	High (P10)	Mean (Pm)	Chance of Success
	71	130	225	140	

Drilling		
Total Depth	Approx. 3,500m bGL	Rig available and on contract
Cost Estimate	< \$10 million	



- Faulted anticline, drilled by SBK-1 (2000) by previous operator
- The TAGI reservoir flowed gas to surface, with no mechanical stimulation
- Sound Energy seismic acquisition & reprocessing has enhanced subsurface imaging
- SBK-1 well trajectory (drilled in 2000) proximal to a fault and in a small compartment, a suboptimal location
- Recovered gas had low levels of CO₂ (~1%) & N₂ (~6%) as per average of well test separator samples taken



Slide

5

Exploration
Summary

² Internal exploration potential estimates, unrisked Gas Initially-In-Place (gross) includes non-hydrocarbons, common examples of which are carbon dioxide and nitrogen

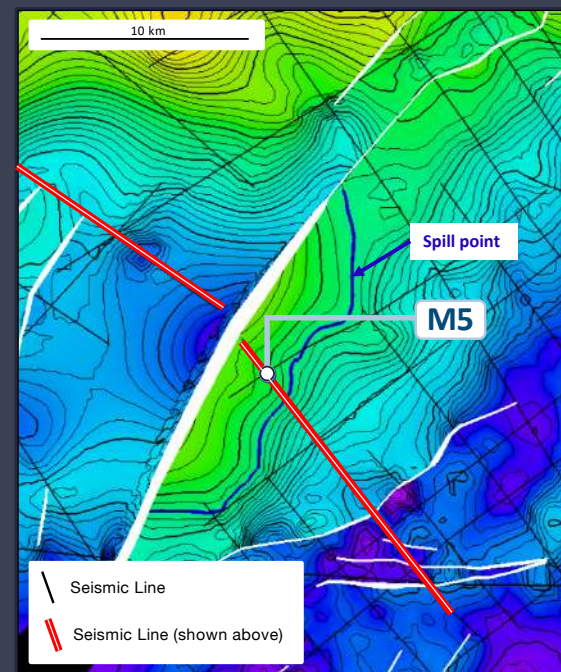
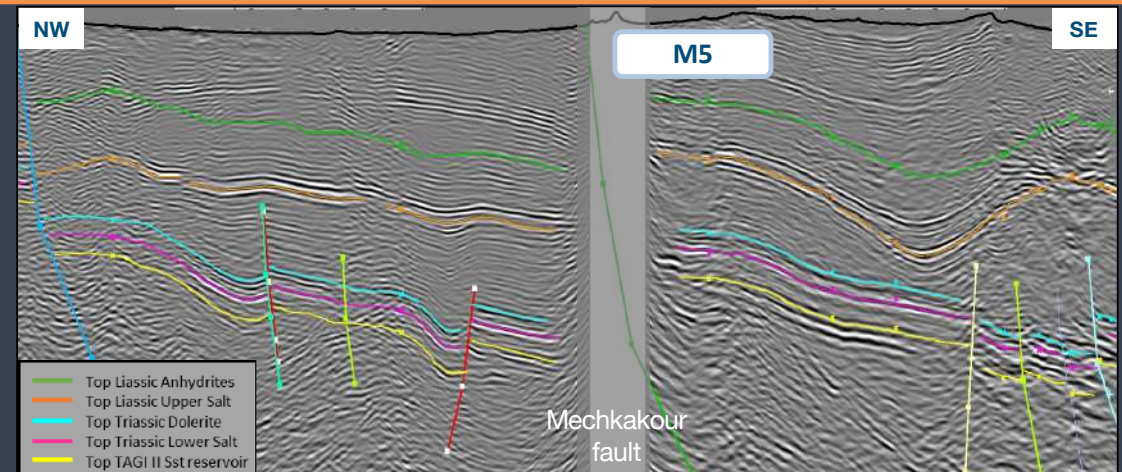
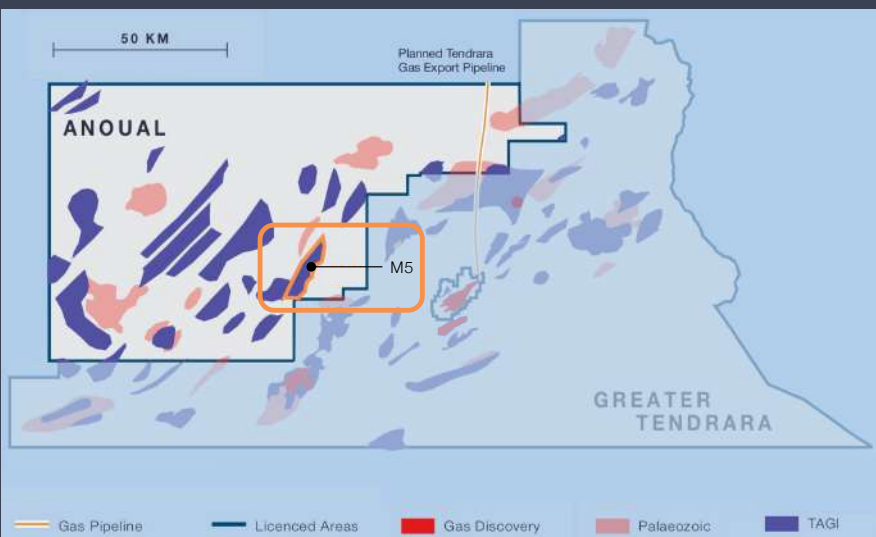


ANOUAL PERMIT: Exploration of M5 Prospect

Annual Exploration Permit	
Term	9 years from August 2017
Parties	Sound Energy 75% (operator), ONHYM 25%
Area	8,873 km ² , only 1 well drilled to date in permit area
Commitments	1 well commitment to be completed before December 2022

Key Subsurface Points					
Source	Palaeozoic, Silurian and Devonian organic rich shales				
Reservoir	Triassic TAGI, dominantly alluvial & fluvial sandstones and conglomerates				
Seal	Triassic, salt 500-1000m in thickness				
GIIP (Bcf) ¹	Low (P90)	Best (P50)	High (P10)	Mean (Pm)	Chance of Success
	332	800	1728	943	

Drilling		
Total Depth	Approx. 3,000m bGL	Rig available and on contract
Cost Estimate	< \$7 million	



- Prior to 2018 this concept had no seismic imaging, new seismic indicates the potential presence of a three-way dip closure
- The seismic images the top and base TAGI reflectors, indicating a possible thick TAGI sandstone sequence is present, potentially up to 420m
- A well on M5 would be a key new penetration in the basin and on a structure with the potential to be larger than the TE-5 Horst gas discovery

¹ Internal exploration potential estimates, unrisks Gas Initially-In-Place (gross) includes non-hydrocarbons, common examples of which are carbon dioxide and nitrogen

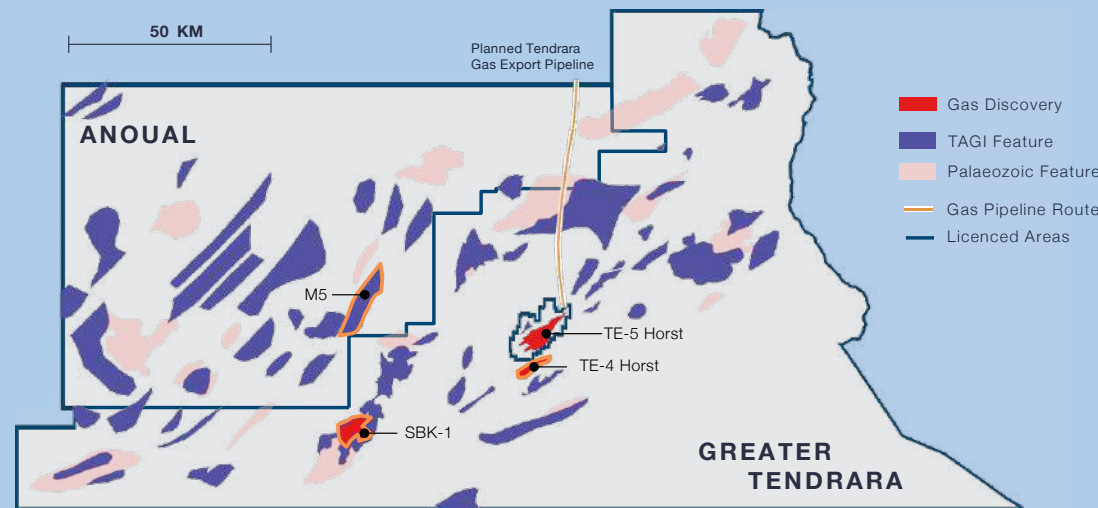
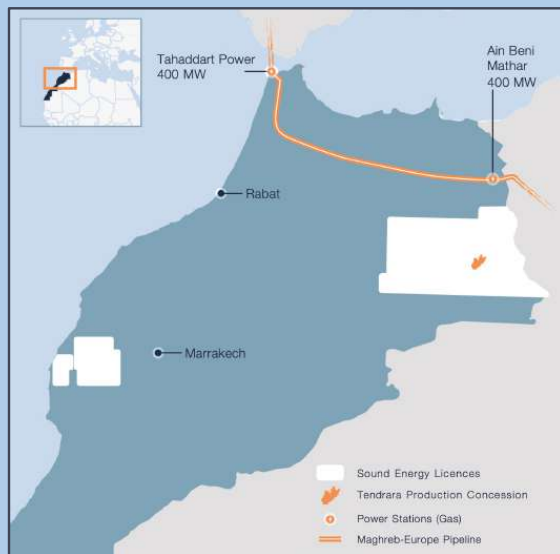
Slide

6

Exploration
Summary



GREATER TENDRARA & ANOUAL: Appraisal & Exploration Summary



Appraisal and Exploration Opportunity Summary

Name	Unrisked Volume Potential (GIIP) ¹ – Bcf gross			Chance of Success	Comments
	Low (P90)	Mean (Pm)	High (P10)		
TE-4 Horst Appraisal	153	273	408	36%	Appraisal of fault block adjacent to the TE-5 Horst development progressing infrastructure for rapid monetization. Primary geological risk; presence of effective reservoir
SBK-1 Appraisal	71	140	225	50%	Gas discovery previously drilled in a suboptimal location and requiring appraisal, within tieback distance to progressing infrastructure are the TE-5 Horst. Primary geological risk; presence of effective reservoir
M5 Exploration	332	943	1,728	21%	Largest currently identified remaining structural closure at TAGI level in an undrilled region of the basin, located above the predicted gas source. Primary geological risks; presence of trapping geometry as mapped and presence of effective reservoir
Unrisked Aggregated Volume Potential¹		1,356			

¹ Internal exploration potential estimates, unrisked Gas Initially-In-Place (gross) includes non-hydrocarbons, common examples of which are carbon dioxide and nitrogen

Slide

7

Exploration
Summary

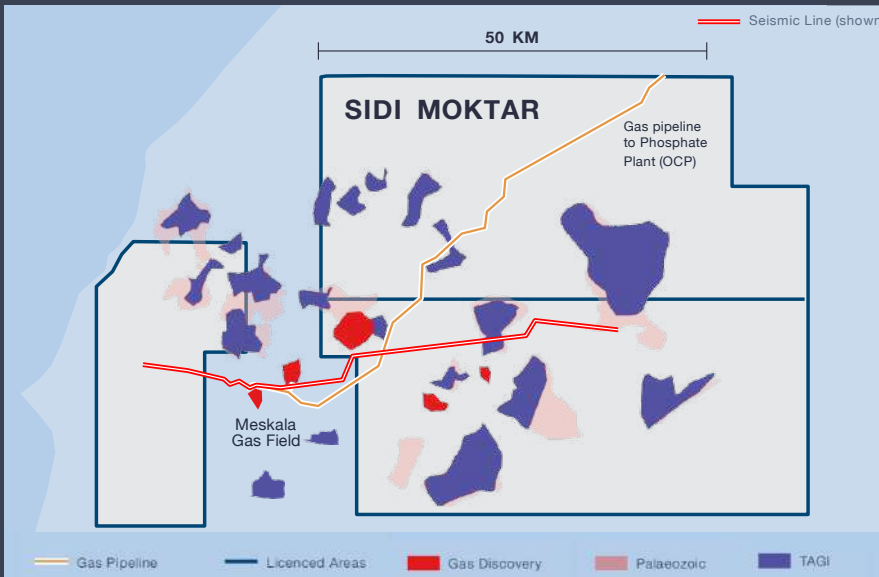


SIDI MOKTAR PERMIT: Seismic to mature leads to drillable prospects

Sidi Moktar Exploration Permit	
Term	10 years from April 2018
Parties	Sound Energy 75% (operator), ONHYM 25%
Area	4,712 km ² , 44 wells drilled
Commitments	500 kms of 2D seismic & well abandonment before October 2022

Key Subsurface Points	
Source	Palaeozoic, Silurian and Devonian organic rich shales
Reservoir	Triassic TAGI ¹ , dominantly alluvial & fluvial sandstones and conglomerates
Seal	Triassic, salt 500-1000m in thickness

Seismic		
Total Length	500 kms	Environmental Impact Assessment has been completed and approved.
Cost Estimate	< \$6 million	



From Finch (2018) MSc thesis, The impact of Tertiary folding and inversion tectonics on the prospectivity of the Sidi Moktar area, Essaouira Basin, Morocco

- Adjacent to the 'play proving' Meskala Gas Field (operated by ONHYM), produces gas and condensate from a sub-salt Triassic reservoir
- These deeper sub-salt plays are underexplored, historical exploration wells focussed on shallow objectives
- The few sub-salt penetrating wells drilled on poor sub-salt seismic imaging
- Extensive salt seal, sub-salt overpressure observed in historical drilling
- Potential of 8.9 Tcf gross (mid-case unrisked GIIP¹) identified in 25 sub-salt structural leads with potentially thicker reservoir than Meskala.
- Our seismic work program has the potential to de-risk a number of these leads for near term drilling by additional coverage and improved imaging

Slide

8

Exploration
Summary

¹ Internal exploration potential estimates, unrisked Gas Initially-In-Place (gross) includes non-hydrocarbons, common examples of which are carbon dioxide and nitrogen



EXPLORATION SUMMARY

FARMOUT A POSITION IN EXPLORATION PERMITS TO FUND OUR INFRASTRUCTURE-LED DRILLING AND SEISMIC PROGRAMMES

GREATER TENDRARA & ANOUAL DRILLING

- ▶ Drilling campaign targeting aggregated > 1 Tcf¹ in a proven gas basin
- ▶ Commercialisation through developing infrastructure centred on the TE-5 Horst, sufficient capacity designed into the planned 120 km 20" Tendrara Export Pipeline (connecting with the existing Gazoduc Maghreb Europe pipeline), or as standalone projects.
- ▶ Rig available, on contract
- ▶ Further opportunities exist for follow on exploration

SIDI MOKTAR SEISMIC

- ▶ Significant potential around the Meskala Gas field which proves the sub-salt gas potential of this permit.
- ▶ Requires a short seismic programme to mature leads to drillable prospects

¹ Internal exploration potential estimates, aggregated Pmean, unrisksed Gas Initially-In-Place (gross, 100%) includes non-hydrocarbons, common examples of which are carbon dioxide and nitrogen

Slide

9

Exploration
Summary





Glossary of terms

Bcf	Billion Standard Cubic Feet
Best Estimate	With respect to resources categorization, the most realistic assessment of quantities of petroleum if only a single result were reported. If probabilistic methods are used (e.g. Monte Carlo Simulation), there should be at least a 50% probability (P50) that the quantities actually recovered will equal or exceed the best estimate.
Chance of Success	The estimated probability that drilling activities will confirm the existence of a significant accumulation of petroleum and for them to be tested to flow to the surface.
Gas Initially-in-Place (GIIP)	The total quantity of gaseous petroleum that is estimated to exist originally in naturally occurring reservoirs, as of a given date. Petroleum may also contain non-hydrocarbon compounds, common examples of which are carbon dioxide, nitrogen, hydrogen sulfide, and sulfur.
High Estimate	With respect to resources categorization, this is considered to be an optimistic estimate of quantities of petroleum if only a single result were reported. If probabilistic methods are used (e.g. Monte Carlo Simulation), there should be at least a 10% probability (P10) that the quantities actually recovered will equal or exceed the high estimate.
Hydrocarbons	Hydrocarbons are chemical compounds consisting wholly of hydrogen and carbon molecules.
Low Estimate	With respect to resources categorization, this is considered to be a conservative estimate of quantities of petroleum if only a single result were reported. If probabilistic methods are used (e.g. Monte Carlo Simulation), there should be at least a 90% probability (P90) that the quantities actually recovered will equal or exceed the low estimate.
Mean	The sum of a set of numerical values divided by the number of values in the set.
Monte Carlo Simulation	A type of stochastic mathematical simulation that randomly and repeatedly samples input distributions (e.g., reservoir properties) to generate a resulting distribution (e.g., Gas Initially-in-Place).
Non-Hydrocarbon Gas	Associated gases such as nitrogen, carbon dioxide, hydrogen sulfide, and helium that are present in naturally occurring petroleum accumulations.
Petroleum	Defined as a naturally occurring mixture consisting of, but not limited to, hydrocarbons in the gaseous, liquid, or solid phase. Petroleum may also contain non-hydrocarbon compounds, common examples of which are carbon dioxide, nitrogen, hydrogen sulfide, and sulfur. In rare cases, non-hydrocarbon content of petroleum can be greater than 50%.
Play	A project associated with a prospective trend of potential prospects, but which requires more data acquisition and/or evaluation to define specific Leads or Prospects.
Probability	The extent to which an event is likely to occur, measured by the ratio of the favourable cases to the whole number of cases possible. PRMS convention is to quote cumulative probability of exceeding or equalling a quantity where P90 is the small estimate and P10 is the large estimate.
Probabilistic Method	The method of estimation of resources is called probabilistic when the known geoscience, engineering, and economic data are used to generate a continuous range of estimates and their associated probabilities (e.g. Monte Carlo Simulation).
Recovery Efficiency	A numeric expression of that portion (expressed as a percentage) of in-place quantities of petroleum estimated to be recoverable by specific processes or projects, most often represented as a percentage. It is estimated using the recoverable resources divided by the hydrocarbons initially in-place. It is also referenced to timing; current and ultimate (or estimated ultimate) are descriptors applied to reference the stage of the recovery (also called recovery factor)
Risk	The probability of loss or failure. Risk is not synonymous with uncertainty. Risk is generally associated with the negative outcome, the term “chance” is preferred for general usage to describe the probability of a discrete event occurring.
TAGI	Trias Argilo-Gréseux Inférieur Formation, a geological unit of Triassic age present in various regions across North Africa.
Tcf	Trillion Standard Cubic Feet

Slide

10

Exploration
Summary

The Estimates in this presentation are consistent with SPE (The Society of Petroleum Engineers) PRMS (Petroleum Resource Management System) guidelines.



For further information please contact:

questions@soundenergyplc.com

chairman@soundenergyplc.com

Slide

11

Exploration
Summary

Disclaimer: The investment mentioned in this document may not be suitable for all recipients or be appropriate for their personal circumstances. The information in this document is believed to be correct but cannot be guaranteed. Opinions constitute our judgment as of this date and are subject to change without warning. This document is not intended as an offer or solicitation to buy or sell securities. Past performance is not necessarily indicative of future performance and the value of investments may fall as well as rise and the income from them may fluctuate and is not guaranteed. Investors may not recover the amount invested. Some securities carry a higher degree of risk than others. The levels and basis of taxation can change. The contents of this document have been prepared by, are the sole responsibility of, and have been issued by the Company.